

VEVOR[®]

TOUGH TOOLS, HALF PRICE

Technical Support and E-Warranty Certificate www.vevor.com/support

HYDRAULIC LIFT TABLE ASSEMBLY & OPERATION INSTRUCTIONS

We continue to be committed to provide you tools with competitive price.

"Save Half", "Half Price" or any other similar expressions used by us only represents an estimate of savings you might benefit from buying certain tools with us compared to the major top brands and does not necessarily mean to cover all categories of tools offered by us. You are kindly reminded to verify carefully when you are placing an order with us if you are actually saving half in comparison with the top major brands.

VEVOR[®]

TOUGH TOOLS, HALF PRICE

HYDRAULIC LIFT TABLE

MODEL:TF15/TF23 TF50 TFD15 TFD35 TFD80



NEED HELP? CONTACT US!

Have product questions? Need technical support? Please feel free to contact us:

✉ CustomerService@vevor.com

This is the original instruction, please read all manual instructions carefully before operating. VEVOR reserves a clear interpretation of our user manual. The appearance of the product shall be subject to the product you received. Please forgive us that we won't inform you again if there are any technology or software updates on our product.

Note: Owner and Operator MUST read and understand this operating instructions before use this table truck

SPECIFICATIONS

Model	TF15/TF23	TF50	TFD15	TFD35	TFD80
Capacity	150Kg/230Kg	500Kg	150Kg	350Kg	800Kg
Maximum Height	720mm	900mm	1270mm	1530mm	1500mm
Minimum Height	220mm	285mm	275mm	350mm	500mm
Table Dimension	700x450mm	815x505mm	700x450mm	905x510mm	1200x600mm
Construction	Overall Steel Construction				
Wheels	Hard Rubber with Ball Bearings.				

Remark: Specifications will be changed without prior notice.

SAVE THIS MANUAL

- 1.Read and understand the instruction manual. Failure to comply with the instructions and warnings in this manual may result in personal injury or property damage.
- 2.Do not load hydraulic table cart beyond its rated capacity.
- 3.Do not allow people to sit or ride on the hydraulic table cart.
- 4.Secure load before raising or lowering hydraulic table cart.
- 5.Do not transport loads with hydraulic table cart in a raised position.
- 6.Use only on smooth surfaces.
- 7.Keep hands and feet clear when raising or lowering lift.
- 8.Open release valve knob slowly to allow load to descend in a controlled

manner.

9.Be sure to wear ANSI approved safety gloves when using tools or equipment.

10.Release load before service or maintenance.

11.Avoid off-center loads. Do not operate if workpiece tilts or binds during compression.

12.STOP and release compression if you suspect imminent structural failure. If safe, inspect thoroughly and reposition before proceeding.

13.Keep bystanders out of work area

14.This product is not a toy. Keep it out of reach of children.

The Warnings,Cautions,and Instructions discussed in this instruction manual cannot cover all possible conditions and situations that may occur. It must be understood by the operator that common sense and caution are factors which cannot be built into this product,but must be supplied by the operator.

ASSEMBLY

Refer to the Parts Diagram and Parts List on this booklet.

1.Attach the handle(9) to the frame(10) with two flat washers(20) and two bolts(19).

2.Attach the foot lever(50) to the lift lever(47) with bolt(49) and lock washer(48).

3.For TF50, The table and the rest part is packed separately. Attach the table (1) to the link assembly(2) with two link shafts(3a) and two c-clip(4).

OPERATION

1. Close the valve knob by unclenching the control handle until it stops.
2. Table is raised by activating the foot pedal.
3. To lower the table, slowly draw the control handle.
4. Before loading, and while stationary, lock the caster brake.

MAINTENANCE

1. Lubricate each friction point monthly with a good quality grease.
2. Check the free movement and wear of wheels. Replace if needed.
3. Check caster brake function. It should lock firmly and release completely.
4. Check for oil leakage from hydraulic cylinder. The hydraulic cylinder is not user serviceable.

PLEASE READ THE FOLLOWING CAREFULLY

The manufacture and/or distributor has provided the parts diagram in this manual as reference tool only. Neither the manufacture nor distributor makes any representation or warranty of any kind to the buyer that he or she is qualified to make any repairs to the product or that he or she is qualified to replace any parts of the product. In fact, the manufacture and/or distributor expressly states that all repairs and parts replacement should be undertaken by certified and licensed technicians and not by the buyer. The buyer assumes all risk and liability arising out of his or her repairs to the original product or replacement parts thereto. Or arising out his or her installation of replacement parts thereto.

TROUBLE SHOOTING

(NOTE: DO NOT ATTEMPT TO REPAIR THE TABLE TRUCK UNLESS YOU ARE TRAINED AND AUTHORIZED TO DO SO.)

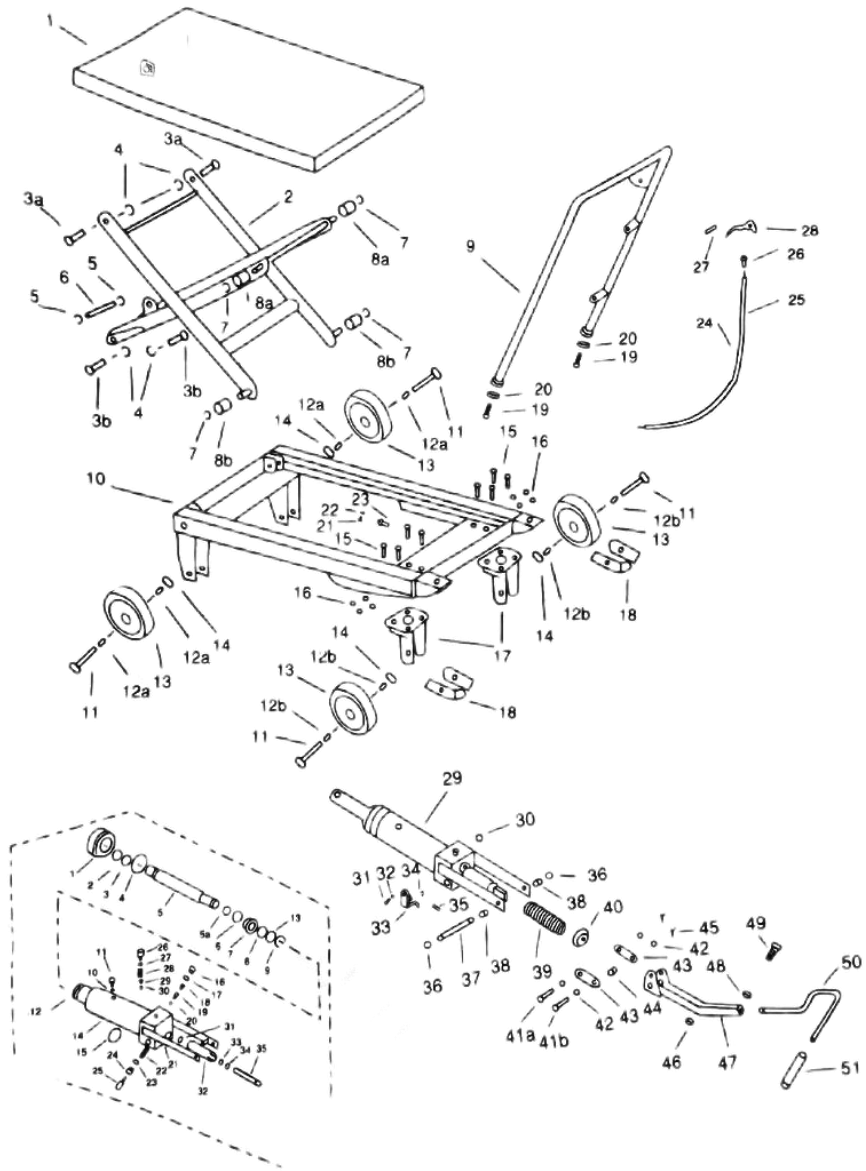
Trouble	Clause	Fixing Methods
The table can not be lifted up ,while activate the foot pedal.	<ul style="list-style-type: none"> -The set screw is not in correct position ,the pump valve is opened. -The hydraulic oil has impurities. -The hydraulic oil is not enough. -Air come into the hydraulic oil. 	<ul style="list-style-type: none"> -Adjust the set screw(26) up or the set screw(23) forward. -Change the oil. -Fill the oil. Remove the long bolt(11). Add enough oil. Then tighten the screws. -Banish the air(pump air breather(11)).
The table can not be lowered quickly ,while release the valve quickly.	<ul style="list-style-type: none"> -The set screw is not in correct position ,the pump valve is not opened at all. -The hydraulic oil has impurities. -Air come into the hydraulic oil. 	<ul style="list-style-type: none"> -Adjust the set screw(26)down or the set screw(23) backward. -Change the oil. -Banish the air(pump air breather(11)).
Leaks	<ul style="list-style-type: none"> -Sealing parts worn or damaged. -Some parts cracked or worn into small. 	<ul style="list-style-type: none"> -Replace with the new one. -Replace with the new one.
The table descends without the release valve works.	<ul style="list-style-type: none"> -The set screw is not in correct position ,the pump valve is not closed at all. -The impurities in the oil cause the valve to be unable to closed tight. -Air come into the hydraulic oil. -Some parts of hydraulic system is cracked or bored. -Sealing parts worn or damaged. 	<ul style="list-style-type: none"> -Adjust the set screw(26) up or the set screw(23) forward. -Change the oil. -Banish the air(pump air breather(11)). -Inspect and replace the waste parts with the new one. -Replace with the new one.

Trouble	Cause	Fixing Methods
<p>The table can not be lowered.</p>	<p>-The piston rod(pump (5)) or link assembly(2) is deformed resulting from partial loading slanting to one side or overloading.</p> <p>-The table was kept n the high position for long time with piston rod bared to arise in rusting and jamming of the rod.</p> <p>-The hydraulic system as jammed.</p>	<p>-Replace the piston rod(pump (5)) or link assembly(2).</p> <p>-Keeping the table in the lowest position if not using.</p> <p>-Inspect the hydraulic system and lobby or replace the relative part.</p>
<p>The table truck can not lift rate weight.</p>	<p>-Relief spring(pump(28)) is invalid for a good while.</p>	<p>-Twist relief spring(pump(26)) clockwise a little.</p>

HYDRAULIC LIFT TABLE PARTS

NO.	Description	Q'ty	NO.	Description	Q'ty
1	Table	1	43	Slide Lever	2
2	Link Assembly	1	44	Bushing	1
3a	Link Shaft	2	45	Split Pin	2
3b	Link Shaft	2	46	Rubber Bumper	1
4	C-Clip	4	47	Lift Lever	1
5	C-Clip	2	48	Spring Lock Washer	1
6	Cylinder Shaft	1	49	Bolt	1
7	C-Clip	4	50	Foot Lever	1
8a	Boller Guide	2	51	Foot Lever Pad	1
8b	Roller Guide	2			
9	Handle	1	(1)	Top Nut	1
10	Frame	1	(2)	Dust-Ring	1
11	Long Bolt	4	(3)	O-Ring	1
12a	Wheel Bushing	4	(4)	Oil Seal	1
12b	Wheel Bushing	4	(5)	Piston Rod	1
13	Wheel	4	(5a)	O-Ring	1
14	Nut	4	(6)	O-Ring	1
15	Bolt	8	(7)	Piston Bushing	1
16	Nut	8	(8)	Y-Ring	1
17	Wheel Holder	2	(9)	C-Clip	1
18	Stop Support	2	(10)	O-Ring	1
19	Bolt	2	(11)	Air Breather	1
20	Flat Washer	2	(12)	Inner Oil Cylinder	1
21	Lock Thread Bolt	1	(13)	Oil Seal	1
22	Lock Thread Nut	1	(14)	Outer Oil Cylinder	1
23	Set Screw	1	(15)	Oil Seal	1
24	Thread	1	(16)	Hermetic Nut	1
25	Thread Cover	1	(17)	O-Ring	1
26	Set Screw	1	(18)	Tower Spring	1
27	Spring Pin	1	(19)	Valve	1

NO.	Description	Q'ty	NO.	Description	Q'ty
28	Control Handle	1	(20)	Steel Ball	1
29	Cylinder Assembly	1	(21)	Cylinder Assembly	1.
30	Screw Cover	1	(22)	Spring	1
31	Bolt	1	(23)	O-Ring	1
32	Nut	.1	(24)	Hermetic Copper Nut	1
33	Shove Pin Seat	1	(25)	Shove Pin	1
34	C-Clip	1	(26)	Relief Plug	1
35	Lock Pin	1	(27)	O-Ring	2
36	C-Clip	2	(28)	Relief Spring	1
37	Cylinder Lock Pin	1	(29)	Spring Cover	1
38	Bushing	2	(30)	Steel Ball	1
39	Spring	1	(31)	Copper Seal	1
40	Spring Cover	1	(32)	Pump Cylinder	1
41a	Lock Pin	1	(33)	Y-Ring	1
41b	Lock Pin	1	(34)	Dust-Ring	1
42	.Washer	4	(35)	Pump Piston	1



MADE IN CHINA

VEVOR[®]
TOUGH TOOLS, HALF PRICE

Technical Support and E-Warranty Certificate
www.vevor.com/support